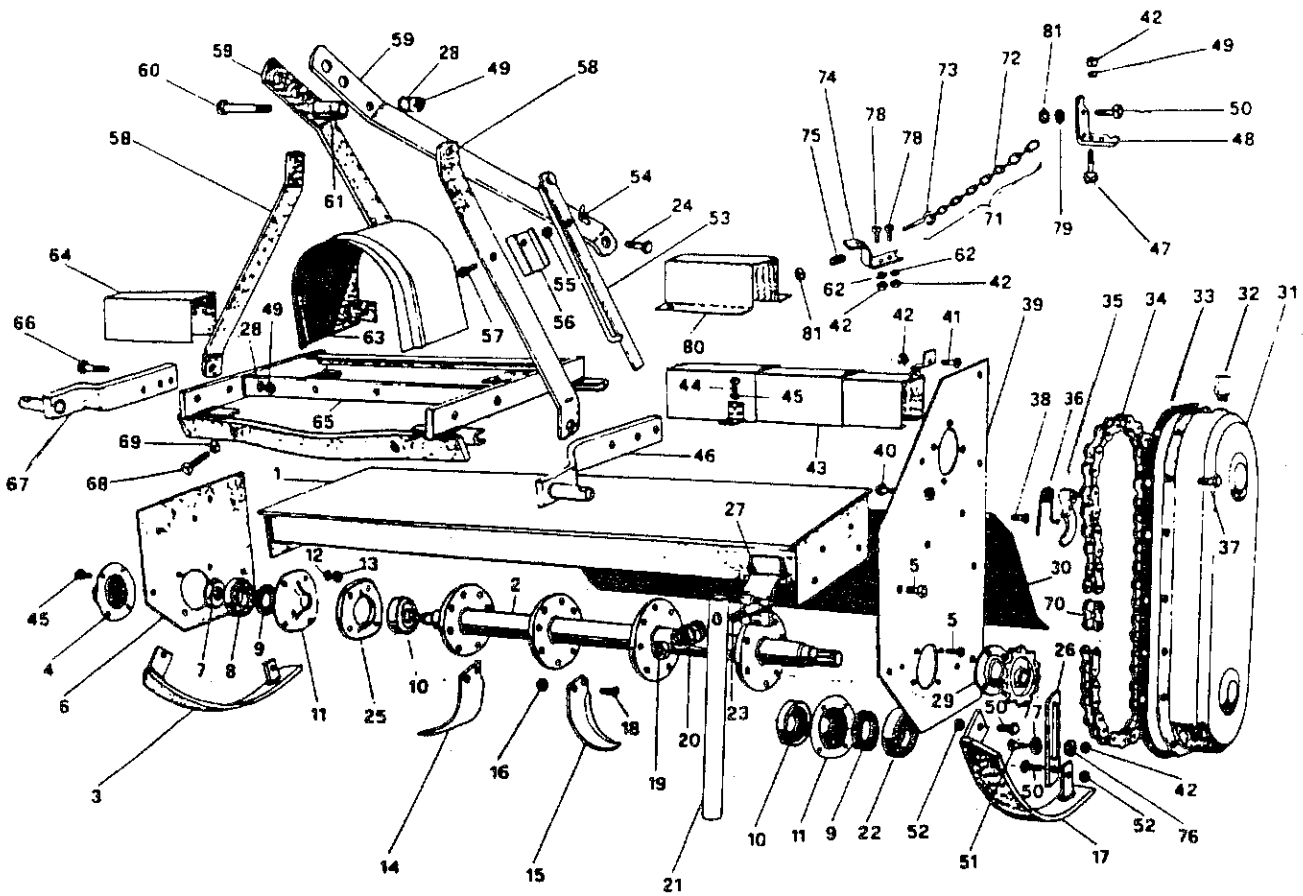
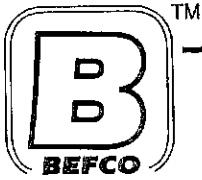


Rotary Tiller
Main Frame
11-G (34, 42, 50)-231; 11-G (34, 42, 50)-530

GR11
SRG





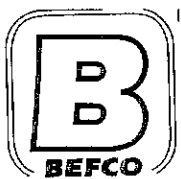
Rotary Tiller
Main Frame

GR11
SRG

11-G (34, 42, 50)-231; 11-G (34, 42, 50)-530

ITEM	PART#	DESCRIPTION	NO.
1	011 0002	Frame - Main Weldment G34	-
	021 0002	Frame - Main Weldment G42	-
	031 0002	Frame - Main Weldment G50	-
2	013 4081	Rotor - G34	-
	023 4081	Rotor - G42	-
	033 4081	Rotor - G50	-
3	012 2051	Skid - right	1
4	003 0091	Bearing cover - right	1
5	000 1241	Bolt M10 x 25	11
6	001 0011	Right Side Panel	1
7	003 0095	Nut - Self locking 30 x 1.5	1
8	003 0094 -	Bearing 6306	1
9	003 4098	Oil Seal 40.60.10 -	2
10	002 2074	Dirt Shield	2
11	003 0092	Bearing cover inner	2
12	000 1011	Washer M10 Lock	15
13	000 1010	Nut m10	15
14	003 0104D	C-Knife - right	-
15	003 0104S	C-Knife - left	-
16	002 1105	Nut M12	-
17	022 2051	Skid - left	1
18	002 1104	Bolt 12 x 30	-
19	003 0358	Nut M14	1
20	000 1176	Spring for Stand	1
21	001 0353	Stand	1
22	002 4332 4332	Bearing 6207 <i>002-5332</i> -	1
23	003 6153	Bolt M14 x 70	1
24	000 7255	Bolt m12 x 35	2
25	001 0073	Cover	2
26	002 1051	Slotted Adjustment Arm	2
27	001 0005	Stand Support	1
28	000 1077	Washer M12	7
29	001 0102	Bearing Cover - left	1
30	012 3281	Rear Deflector G34	-
	022 3281	Rear Deflector G42	-
	032 3281	Rear Deflector G50	-
31	002 2031	Housing Chain and Sprocket <i>COVER</i>	1
32	000 1107	Breather Cap	1
33	002 2032	Gasket Chain Housing	1
34	001 0125	Chain ASA 60 x 46	1
35	003 0148	Chain Tensioner	1
36	003 0158	Chain Tensioner Spring	1
37	000 1046	Bolt M10 x 20	14
38	000 7519	Bolt M14 x 70	2
39	001 0021	Left Side Panel	1
40	003 0155	Bolt M10 x 60	1

*Shear Bolt
000-5096
M6 x 40*

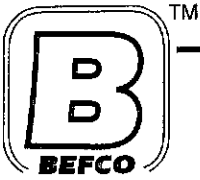


Rotary Tiller
Main Frame

GR11
SRG

11-G (34, 42, 50)-231; 11-G (34, 42, 50)-530

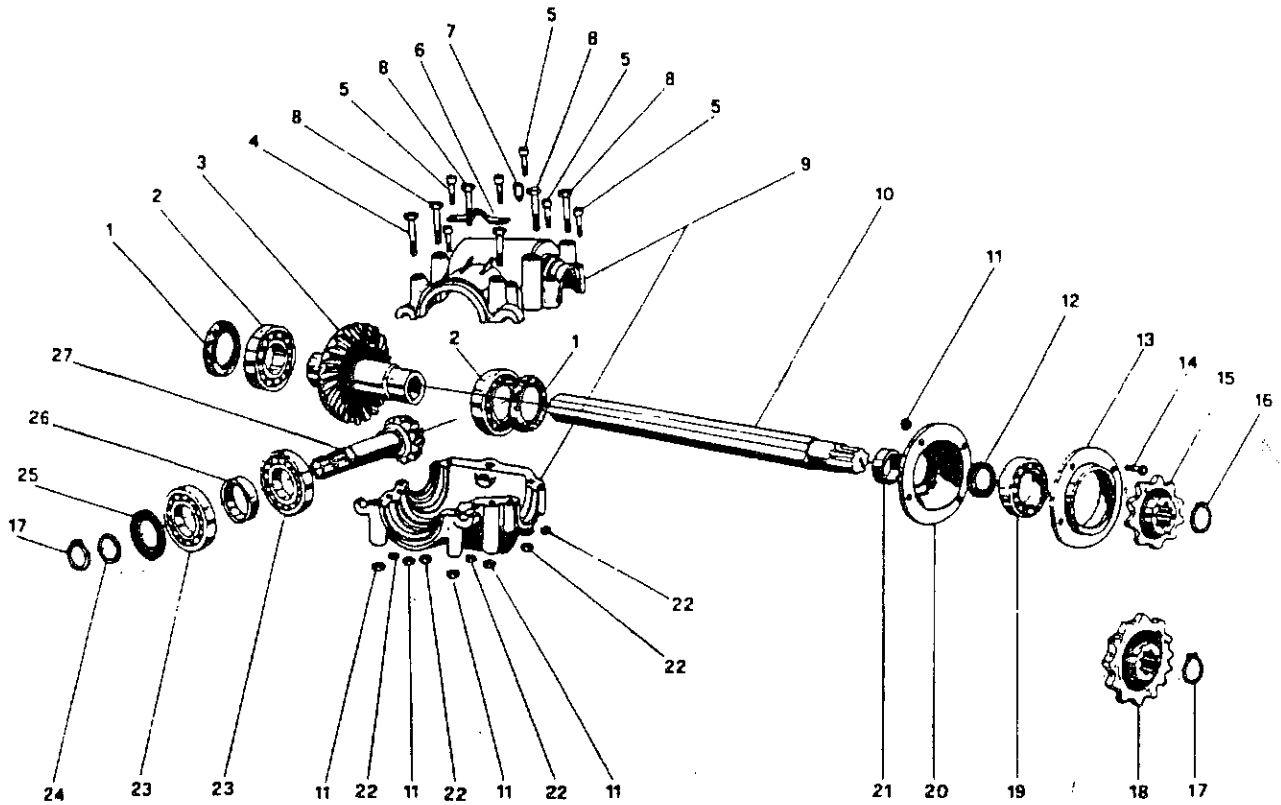
ITEM	PART#	DESCRIPTION	NO.
41	000 1101	Bolt M10 x 45	1
42	000 1279	Nut M10	6
43	011 0255	Protective Cover	-
	021 0255	Protective Cover	-
44	000 6349	Bolt M10 x 20	2
45	000 1008	Bolt M10 x 30	4
46	021 0287	Lower Hitch Plate left	1
47	003 0334	Bolt M10 x 55	1
48	003 0321	Chain Hitch	1
49	000 3038	Nut M12	8
50	000 1278	Bolt M10 x 30	5
51	002 6329	Bolt M10 x 45	2
52	003 0156	Nut M10	4
53	001 0342	Ratchet Arm	1
54	000 1807	Nut M8 Wing	1
55	000 1806	Nut M8	1
56	003 0339	Locking Cover	1
57	000 8037	Bolt M8 x 50	1
58	001 0273	Top Hitch Support	2
59	001 0272	Top Hitch Arm	1
60	003 4286	Bolt M12 x 100	1
61	002 1285	Spacer	1
62	000 1280	Washer M10	2
63	003 4355	Protective Cover	1
64	001 0248	Right Protection	-
	001 0249	Right Protection	-
65	001 0241	Side Shift Complete	1
66	000 1105	Bolt M12 x 55	2
	000 7716	Bolt M12 x 45	2
67	011 0287	Lower Hitch Plate Right	1
68	002 2279	Bolt M12 x 60	2
69	000 1106	Nut M12	2
70	001 0126	Master Link #60	1
71	001 0317	Chain Complete #60	1
72	001 0318	Chain #60	1
73	002 1304	Lifting Hook	1
74	002 1306	Chain Hitch	1
75	002 1315	Spring	1
76	002 1053	Washer with Holes	2
77	002 1052	Washer with Thread	2
78	003 3176	Bolt M10 x 25	2
79	003 0327	Washer	1
80	001 0258	Left Protection	1
81	003 0156	Nut - Self Locking M10	2

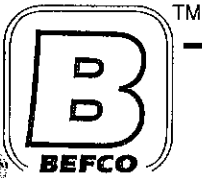


Rotary Tiller
Gear Box

GR11
SRG

11-G (34, 42, 50)-231; 11-G (34, 42, 50)-530

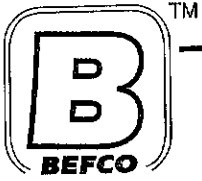




Rotary Tiller
 Gear Box
 11-G (34, 42, 50)-231; 11-G (34, 42, 50)-530

GR11
 SRG

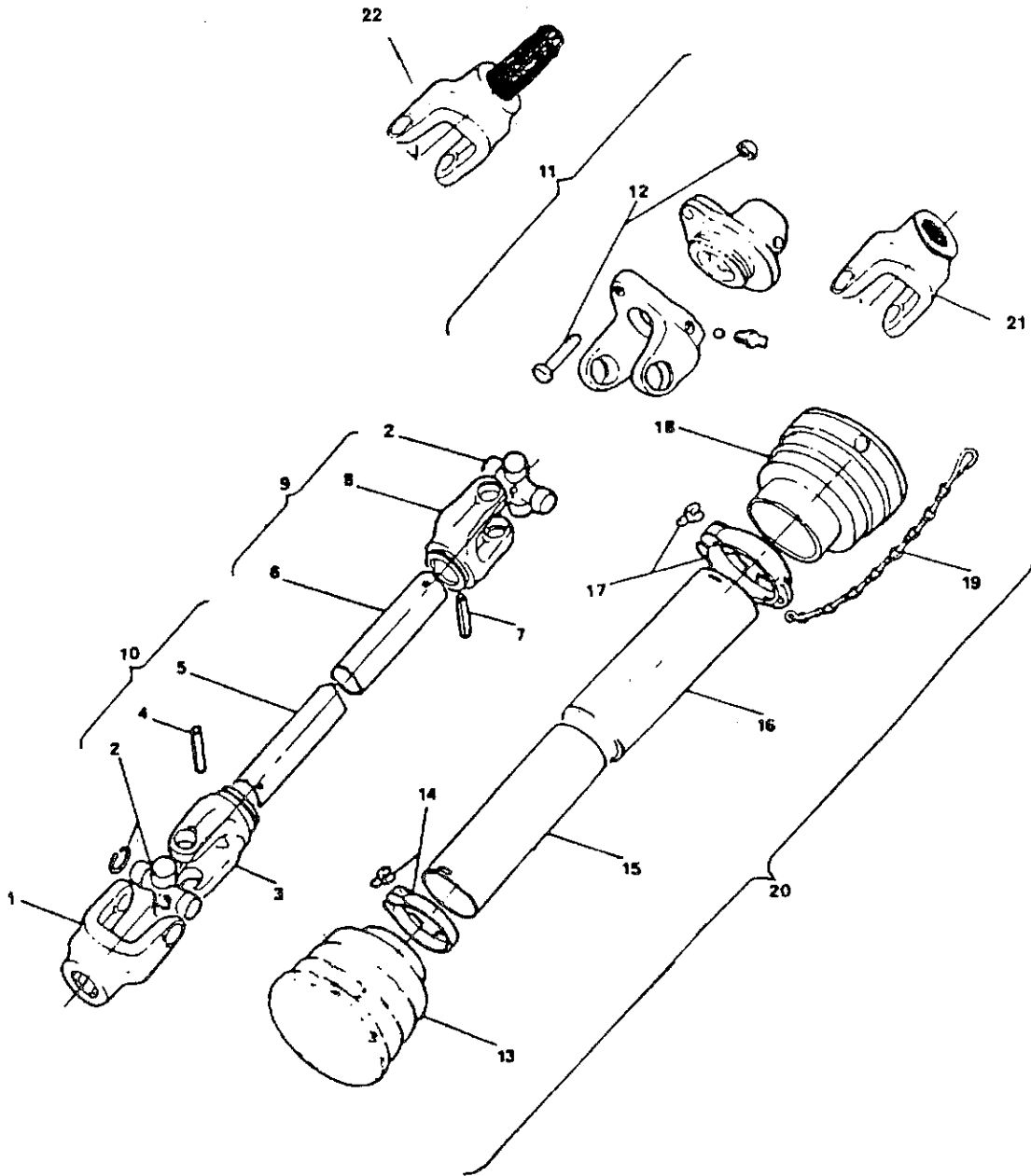
ITEM	PART#	DESCRIPTION	NO.
1	001 0192	Oil Seal 40.68.10	2
2	001 2149	Bearing 6208	2
3	001 0182	Bevel Gear-540 RPM	1
	001 0425	Bevel Gear-2000 RPM	1
4	001 0169	Bolt M10 x 110	2
5	001 0173	Bolt M8 x 50	7
6	001 0180	Plate	1
7	001 0177	Breather Cap	-
8	001 0165	Bolt M10 x 120	4
9	001 0163	Gear Box Housing	1
10	011 0158	Drive Shaft	-
	021 0158	Drive Shaft	-
	031 0158	Drive Shaft	-
11	000 1010	Nut M10	10
12	003 4098	Oil Seal 40.60.10	1
13	001 0143	Bearing Cover Outer	1
14	000 1241	Bolt M10 x 25	3
15	001 0111	Sprocket Z-15 -(Standard) 540 RPM	-
	001 0115	Sprocket Z-12 ✗	-
	001 0118	Sprocket Z-9-2000 RPM	-
16	001 0122	Snap Ring M30 Ex. ✗	1
17	004 2122	Snap Ring M35 Ex. ✗	1
18	001 0112	Sprocket Z-16-(Standard) 540 RPM	-
	001 0116	Sprocket Z-19	-
	001 0119 ✗	Sprocket Z-22-2000 RPM	-
19	003 0094	Bearing 6306	1
20	003 0092	Bearing Cover Inner	1
21	001 0148	Spacer	1
22	000 6513	Nut M8	7
23	002 5332	Bearing 6207	2
24	003 4196	Spacer Ring	1
25	000 2295	Oil Seal 35.62.10	1
26	001 0196	Spacer-540 RPM	1
	001 0435	Spacer-2000 RPM	1
27	001 0187	Pinion Gear-540 RPM	1
	001 0429	Pinion Gear-2000 RPM	1
	050 0514	Gear Box Com.-540 RPM	-
	050 0516	Gear Box Com.-2000 RPM	-



Rotary Tiller
PTO

GR11
SRG

11-G (34, 42, 50)-231; 11-G (34, 42, 50)-530





Rotary Tiller
PTO

GR11
SRG

11-G (34, 42, 50)-231; 11-G (34, 42, 50)-530

ITEM	PART#	DESCRIPTION	NO.
1	002 001E	Yoke Tractor End-Quick Attach	1
2	012 004E	Cross & Bearing 23.8 X 61.3	2
3	012 002E	Yoke Male Tube	1
4	000 011E	Roll Pin M8 X 50	1
5	120 107E	Male Tube	1
6	120 207E	Female Tube	1
7	000 012E	Roll Pin M8 X 55	1
8	012 003E	Yoke Female Tube	1
9	948 114B	Shaft Female Complete-Implement End	1
10	948 115B	Shaft Male Complete-Tractor End	1
11	220 001E	Yoke Shearbolt-Implement End	1
12	000 509E	Shear Bolt M6 X 40	1
13	013 015E	Guard Cone Inner	1
14	012 006E	Locking Collar Inner	1
15	121 206E	Tube Shield Male	1
16	121 106E	Tube Shield Female	1
17	012 007E	Locking Collar Outer	1
18	013 016E	Guard Cone Outer	1
19	016 025E	Safety Chain	1
20	220 206E	Shield Complete	1
21	022 001E	Yoke No Protection IMP.	1
22	948 127B 022-003E	Yoke Male 2000 RPM 69.80 rpm 25	1
	320 107E	*PTO Complete-No. Prot.-T20	-
	948 107B	*PTO Complete-Shear Pin -T20	-
	948 102B	*PTO Ccomplete-2000 RPM	-
	026 004E	Push Pin Set for 022-001	1
	000 024E	Ball Bearing for 220-001	19
	000 020E	Grease Fitting M8 X 1 for 220-001	1